



# Monthly Business Connection

989-845-3055

Email: [info@chesaningchamber.org](mailto:info@chesaningchamber.org)

Web: [www.chesaningchamber.org](http://www.chesaningchamber.org)

November 2018

*Chesaning  
Chamber of Commerce  
Board of Directors*

**Greg Bruff,**  
President  
Waddell & Reed

**Ron Ebenhoeh**  
Vice President  
Metro Mortgage

**Jessie Stewart,**  
Secretary  
Sovis Insurance

**Steve Keck,**  
Treasurer  
H&R Block

**Jeri Birchmeier**  
Chesaning Nursing &  
Rehabilitation Center

**Stephanie Domina**  
The State Bank

**Valina James**  
The Silver Thimble

**Tom Lavery**  
CenturyLink

**Bobbi McIntyre**  
Studio 124

**Ron Poyer**  
H&R Block

**Nick Stoddard**  
Stoddard Classic Cars

**Christopher Theile**  
Swartzmiller Lumber

**Kate Weber**  
Executive Director

## 35 Years of Creating Home-Town Holiday Memories

Christmas is in the air. Snow is falling, music is playing, and Hallmark movies are on 24 hours a day. Your Candlelight Walk committee and chamber board are busy just like the elves at the North Pole preparing for a milestone event. I can't believe that it has been 35 years since Bonnie Ebenhoeh and the Boulevard Association started our quaint tradition. The numerous luminaries, twinkling lights, Christmas music, and decorated businesses put the sparkle of Christmas in Chesaning. Taking a stroll through our village streets is like taking a stroll back in time. We have many great new amenities in our town, but the one thing that time can't change is good ole fashioned customer service, smiling faces and family ties. You can feel the love and appreciation of being a part of the family of the Chesaning community with every hello, wave and smile from your neighbors.

We are constantly changing and trying to re-invent the festival to keep it alive and fresh. 20 years ago, Darlene Valentine came up with the idea of the "Festival of Trees", where locals would decorate a tree and you could bid on it and hopefully win your favorite. This, too, has changed a little, it now has become a raffle and we have added

wreaths and gifts over the years.

Luminaries, carriage rides, gingerbread houses, roasted chestnuts, carolers, craft shows, and local shopping has become a Thanksgiving weekend tradition in Chesaning. Some new things you will see this year are reindeer (revisited from the past), a petting zoo and Kringle's Crossing. At Kringle's Crossing you can do some shopping or participate in children's activities.

Don't forget the best part: Stroll down the boulevard amongst the luminaries or hop on a carriage and enjoy the romance of the season with the soft music and the twinkling lights. If you close your eyes and listen carefully you might be able to feel the heartbeat of Christmas past in Chesaning.

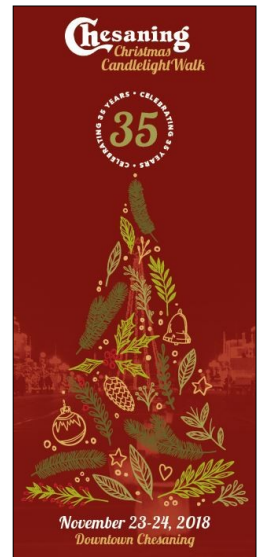
We can't say thank you enough to all of the donors, volunteers and visitors who make the annual Christmas Candlelight Walk a possibility every year. We estimate that it takes thousands of volunteer hours all year long to make this event happen, along with thousands of dollars of financial support. It's truly a community event, by and for generations of residents in the Chesaning area and visitors alike.

Looking forward to seeing you all on Thanksgiving weekend!

Happy Holidays~

*Bobbi*

Roberta McIntyre, Chairperson  
Candlelight Walk Committee



### Inside this issue:

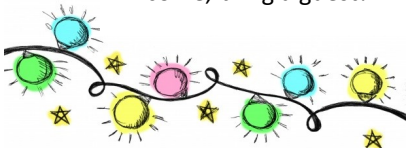
Member News	2
December Calendar	
Celebrating Anniversaries	3
CHS Career Fair Invitation	4
Annual Award Nominations	5
Chamber Raffle and Anniversaries continued	6

## Member News & Community Highlights

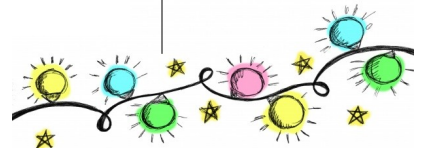


- Please welcome our newest Gold Business member, **Family Rexall Pharmacy!** They have been open for about a year in their location at the corner of Broad and Saginaw, and offer not only pharmacy services, but convenience items, beer, wine and spirits and unique gifts! Stop by to say hello, Monday-Saturday, 9am-8pm and Sunday from 12-4pm!
- Chesaning Area Historical Society is hosting their regular monthly meeting along with a Holiday Potluck at Santa's Village at the Fairgrounds, 2pm on Monday, December 10th. Please bring your own place setting and a dish to pass. Public welcome, bring a guest!
- Are you ready for Small Business Saturday, November 24? Be sure to share your specials with Kate so she can help with marketing!
- Chesaning Area United Appeal is coming soon! Make your donation payable to CAUA and mail to P.O. Box 88, Chesaning MI 48616. Your donations support many area non-profit services.
- The Chamber Board is currently accepting nominations for 4 board positions with 3 year terms (through 2021) Positions are also available on our planning committees for various events and marketing... any member is welcome to join. Call the office to get involved!
- Save the Date! The Chamber Annual Awards and Dinner is scheduled for Saturday, January 19, 2019!

**October Chamber Statistics:**  
**We received**  
**141 Phone Calls,**  
**468 Emails &**  
**76 Visitors**



## December 2018



Sun	Mon	Tue	Wed	Thu	Fri	Sat
Dec. 30	Dec. 31 Chamber Office Closed <b>NEW YEAR'S EVE</b>	<b>Repeating Meetings/Events:</b> <ul style="list-style-type: none"> <li>• Rotary Club meets at noon on Tuesdays, Riverfront Grille</li> <li>• Am. Legion Queen of Hearts Raffle is on Tuesdays at 8pm, Pintown</li> <li>• Kiwanis Meets at 6pm on Tuesdays at Riverfront Grille</li> <li>• K of C Take-Out Fish Fry, Fridays 5-7:30pm</li> </ul>				1 Santa's Village Noon-7pm
2 Am. Legion Breakfast 7:30-11:30am  Santa's Village Noon-7pm	3	4 7:30pm Village Council	5 Chamber Marketing Meeting 8am	6 Zion Luth. Mornings with Mommy-10:30am  Chesaning Twp Board 7:30pm	7	8 In-Stitches Knitting @ Library 11am  Santa's Village Noon-7pm Trinity Comm. Supper 5pm
9 Santa's Village Noon-7pm	10 CAHS Potluck at Santa's Village, 2pm	11	12 Noon Chamber Raffle 6pm DDA Meeting	13 Chamber Board of Directors Meeting 8am	14	15 Santa's Village Noon-7pm
16 Santa's Village Noon-7pm	17	18 7:30pm Village Council	19 K of C Hamburg Night 5-7pm  7pm Library Book Club 7pm Sports Boosters	20 Zion Luth. Mornings with Mommy-10:30am	21	22
23	24  Chamber Office Closed	25 <i>Merry Christmas</i>  Chamber Office Closed	26 Noon Chamber Raffle	27	28	29

"Give thanks for a little and you will find a lot." ~ Hansa Proverb

## American Legion Begins 100<sup>th</sup> Year Celebrations

From August 24, 2018 through Veterans Day 2019, the American Legion is celebrating its 100-year anniversary as a national organization. Chartered by Congress in 1919 as a patriotic veterans' organization, the American Legion is focused on service to veterans, service members and communities. The Legion evolved from a group of war-weary veterans of World War I into one of the most influential nonprofit groups in the USA. Membership swiftly grew to over 1 million, and posts sprang up across the country. Today, membership stands at over 2 million in more than 13,000 posts worldwide organized into 55 departments: one each for the 50 states, along with the District of Columbia, Puerto Rico, France, Mexico and the Philippines. The Chesaning Post #212 was established on May 10, 1932 by founding charter members: F.J. Schirmmuller, Heinie Forteck, Floyd James, John Detwiler, Leo Whitney, Patrick Lacey, Lawrence Shooltz, Ben Sebrick, Dewey Hunt, Ed Rehmann, Learl Schultz, Gilbert Hank, Floyd Burlingame, William Wagner. Post #212 currently has 162 active members.

Chesaning American Legion Post #212 activities include monthly breakfasts, the Queen of Hearts Progressive Card Raffle, Annual Golf Outing, "Toys for Kids" Christmas Program and Honor Guard for various events including, but not limited to military funerals, high school events, festivals, and parades. They also are responsible for placing flags on our local cemetery graves and the boulevard, and awarding the Arion Award and Chesaning Military Classic Scholarships. Chesaning American Legion Post #212, in conjunction with Chesaning Union Schools, established the Chesaning Military Classic Game. This busy post hosts a Flag Retirement Ceremony on Flag Day and Memorial Day Ceremonies held at our local cemeteries, as well as hosting Bingo at the Saginaw V.A. Hospital. They also sponsor youth programs including Boys State for high school students.

What an amazing organization to have in our community! Congratulations, American Legion, and enjoy your year-long celebration!



## Happy 130<sup>th</sup> To Christ Evangelical Lutheran Church!

Some came from Lenawee County while others came directly from Germany. They moved to Brady Township, purchasing land reclaimed from the lumbering industry. They brought with them their faith and founded Christ Evangelical Lutheran Church. Most of the original 16 member families lived within six miles of the church. Among the current members of the congregation are nearly 30 descendants of several founding members. Until 1944, at least some of the congregation's services continued to be conducted in the German language. Because of this, many years later, some will still refer to the congregation as the "German Lutheran church."

On August 27, 1888, the cornerstone for the original church building was laid on donated land. It was completed in late January 1889 and dedicated on February 3, 1889 with a total cost of construction of \$1100.

Throughout the years, several renovations and improvements were made to the original church structure and it served the congregation for nearly 100 years. In 1991, this structure was moved to the Historical Village in Corunna where it remains today.

On August 21, 1983, ground was broken for a new church building. The Lord opened the hearts of the members so that nearly half of the needed funds for construction were provided by the time of the groundbreaking. On October 14, 1984, the new church building was dedicated. The congregation has plans to replace its current parish hall, built in 1944, with a new addition in the near future.

In addition to Christian worship, Christian education has always been important to the congregation. In 1979, the congregation opened its own Lutheran Elementary School, utilizing a modular classroom. The school



**Presented By:**



**Chesaning  
High School**

&

**The Chesaning Chamber  
of Commerce**



**SAVE THE DATE!**

**CAREER  
FAIR**

Showcase your business and share information about your career pathway with Chesaning High School students.

**WHY PARTICIPATE?**

During the Career Fair, high school students and teachers can discuss firsthand the many career opportunities in your career pathway.

Businesses who participate in our Career Fair will have the unique opportunity to meet with the local student workforce to discuss job skills, training, and employee expectations.

Get to know & educate your potential workforce as students learn about career pathways!

**WHEN :**

\*Wednesday, December 19<sup>th</sup>

- 9:00 - 1:00 PM
- Set up from 8:00 - 9:00 AM

\*An alternate date of January 16<sup>th</sup> will be used in the event of a snow day.

**WHERE:**

Chesaning High School Auxillary Gym

- Lunch will be provided
- Tables and chairs will also be provided for display set up.

**RSVP**

Space is limited - RSVP today! Booths will be reserved on a first come, first serve basis.

RSVP's and questions regarding the Career Fair can be directed to Erica Birkmeier @ [ebirkmeier@chesaning.k12.mi.us](mailto:ebirkmeier@chesaning.k12.mi.us)

**RSVP deadline is Wednesday, December 12<sup>th</sup>.**

**We hope to see you there!**



# NOMINATION FORM FOR ANNUAL AWARDS

The Chesaning Chamber of Commerce is continuing our tradition of recognizing excellence in our community by celebrating businesses, employees and citizens for their service and contributions. The awards will be presented during the Annual Dinner on Saturday, January 19, 2019. We invite your nominations for consideration by our Annual Dinner Committee.

Guidelines to be observed:

1. Nominee must be a Chesaning Area Chamber of Commerce member, or the volunteer or employee of a member
2. Nominee gives generously of themselves and/or staff in time and resources to the Chamber and community.
3. All replies will be confidential.
4. Deadline for submitting entries: January 3, 2019

-----  
Please mark the award for which you are nominating the business or person:

**Distinguished Business or Person**     **Lifetime or Outstanding Achievement**     **Star Employee Award**

Nominee's Name: \_\_\_\_\_ Length of Service: \_\_\_\_\_

Contact Name of person making the nomination: \_\_\_\_\_

Email Address: \_\_\_\_\_ Phone number: \_\_\_\_\_

Business or Organization Represented: \_\_\_\_\_

Reason for Nomination: \_\_\_\_\_

\_\_\_\_\_

\_\_\_\_\_

\_\_\_\_\_

\_\_\_\_\_

Please Note Nominee's Accomplishments, Service, Leadership, etc: \_\_\_\_\_

\_\_\_\_\_

\_\_\_\_\_

\_\_\_\_\_

\_\_\_\_\_

You may use additional paper if needed!

**Raffle Winners:**

**October 24**

**Sherry Adelberg**

**Drawn by**

**Jodi McNaughton**

**Pintown Pizza & Lanes**

**November 14**

**Ramon Santana Morel**

**Drawn by**

**Meghan Korf**

**Designs by Bean**

**2019 Chamber Raffle**

**Tickets are now available and make great stocking stuffers! Don't forget our Gift Certificates for your holiday giving, also!**

**Christ Evangelical Lutheran Church... continued from pg. 3**

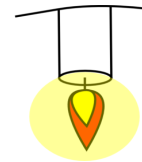
grew quickly and a second modular classroom was needed. In 2000, a permanent school addition was built and dedicated. Today, the school continues to offer full-time Christ-centered education for students in Kindergarten through 8th grade. Not only do students receive instruction in God's Word, but all other academic subjects are taught in the light of God's Word. Smaller class sizes and a lower student-to-teacher ratio offer more personalized, individualized instruction. The current faculty consists of Mr. Alan Schaffer, principal and upper grades teacher and Mrs. Lynn Shonts, lower grades teacher. Rev. David Mielke teaches some religion classes and serves as a spiritual advisor to the school. In addition to its school, the congregation offers many other opportunities for Christian education for all ages through its Cradle Roll, Sunday School, Youth and Adult Bible classes.

During the past 130 years, the congregation has been served by 17 pastors. For many years, Christ congregation shared a pastor with Zion congregation in Chesaning. This arrangement continued until 1969 when Christ congregation called its own pastor. Rev. David Mielke is the current pastor and has served the congregation since 2009. The congregation currently numbers 247 souls.

While many things have changed since 1888, one thing hasn't changed and that is the congregation's reason to exist. The Church continues to be committed to proclaiming the good news of what God has done for all people in Christ Jesus. From its location at the corner of M-57 and S. Hemlock Road, Christ Evangelical Lutheran Church and School continues its joyful witness to the timeless truth of God's Word in order to prepare today's people for tomorrow's eternity.

Christ Evangelical Lutheran Church and School is a member of the worldwide Wisconsin Evangelical Lutheran Synod (WELS) which is headquartered in Milwaukee, WI and has nearly 1200 congregations throughout the United States and on five continents. Worship is held on Sundays at 9:00AM and Mondays at 7:00PM. Bible education for children, youth, and adults is held on Sundays at 10:15AM. In addition, a midweek Bible study for youth and adults is offered on Wednesdays at 10:15AM and 7:00PM. For more information, check out their website at [www.christ-oakley.org](http://www.christ-oakley.org) or call the church office at 989-845-2600.

*The Chamber thanks Christ Evangelical Lutheran Church and School for its annual support of the Candlelight Walk and wishes them a very happy 130th anniversary!*



*35<sup>th</sup> Annual Christmas  
Candlelight Walk  
& Festival of Trees  
Friday and Saturday,  
November 23 & 24*

PLEASE NOTE OUR NEW ADDRESS:  
CHESANING CHAMBER OF COMMERCE  
218 N. FRONT STREET ~ SUITE B  
CHESANING, MI 48616  
ADDRESS SERVICE REQUESTED